

# JONES P.U.D.

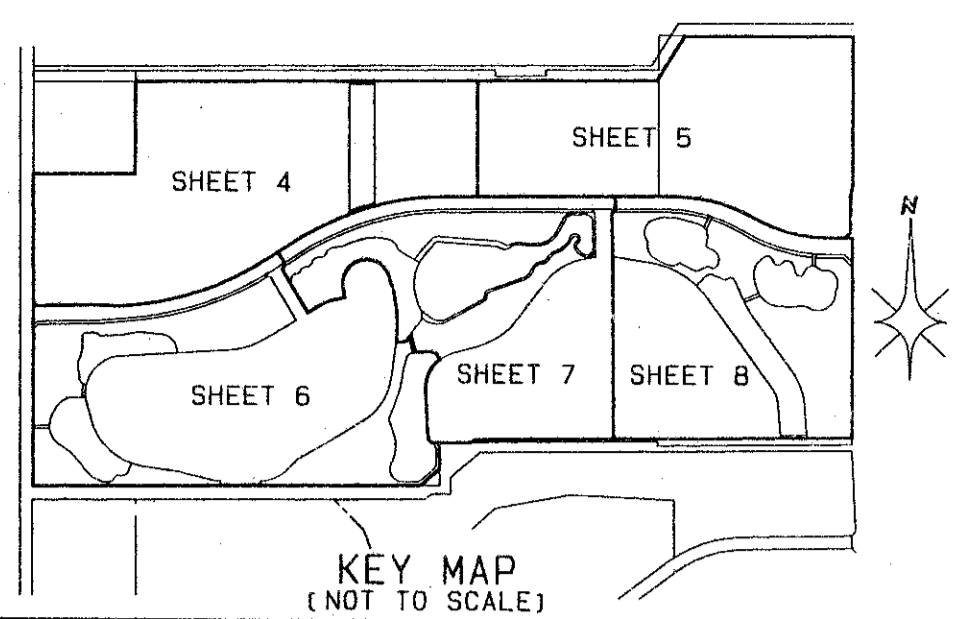
0683-001

78

Pet  
95-19

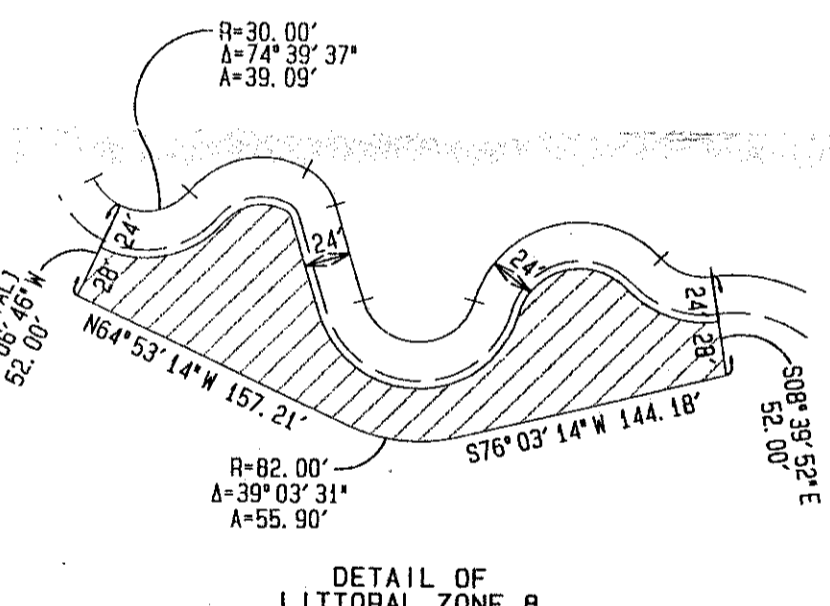
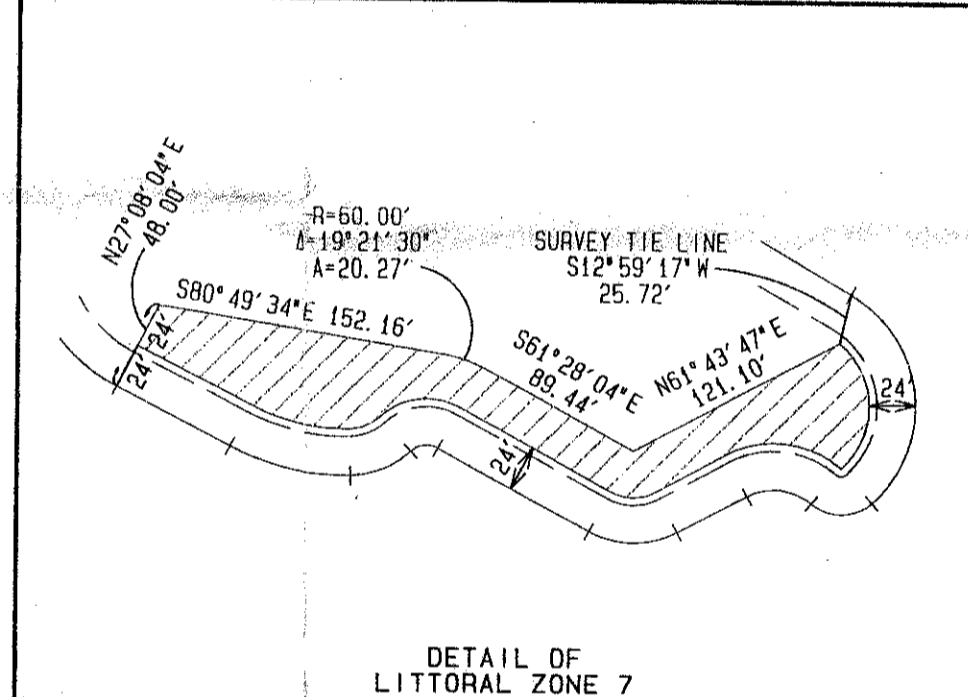
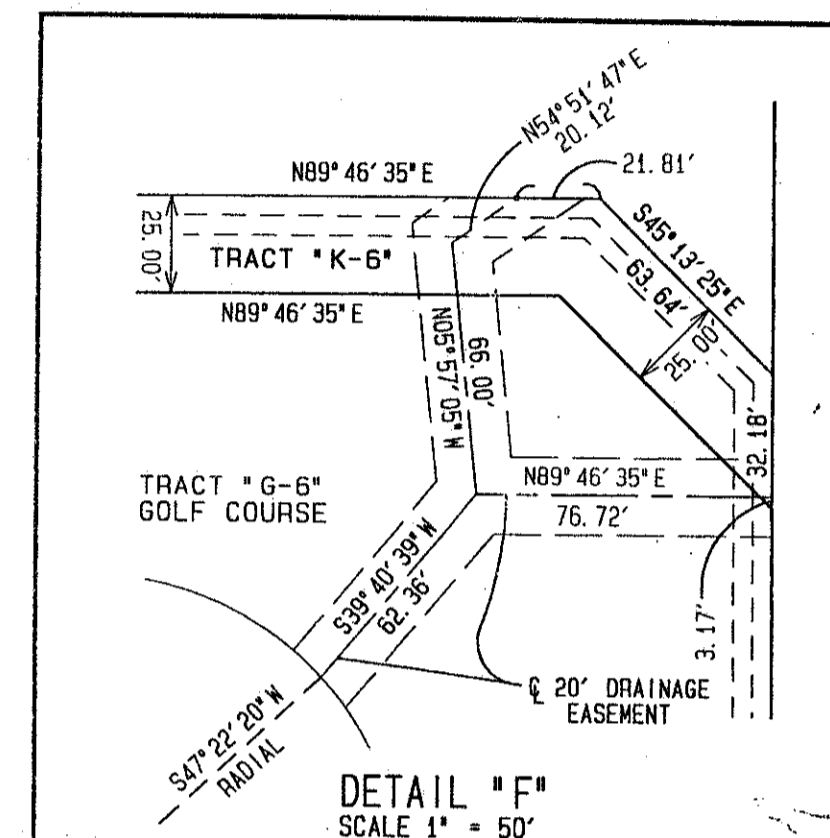
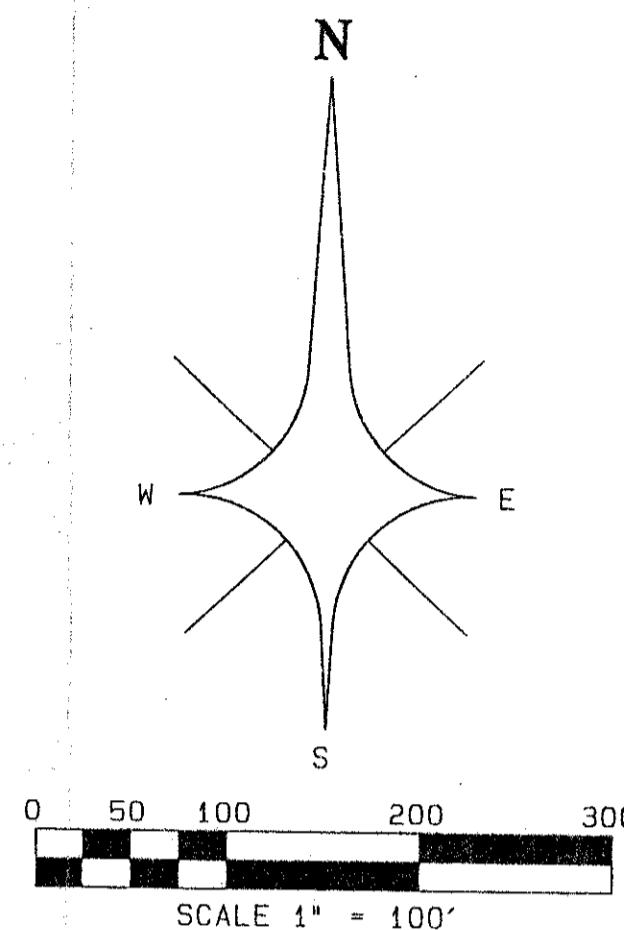
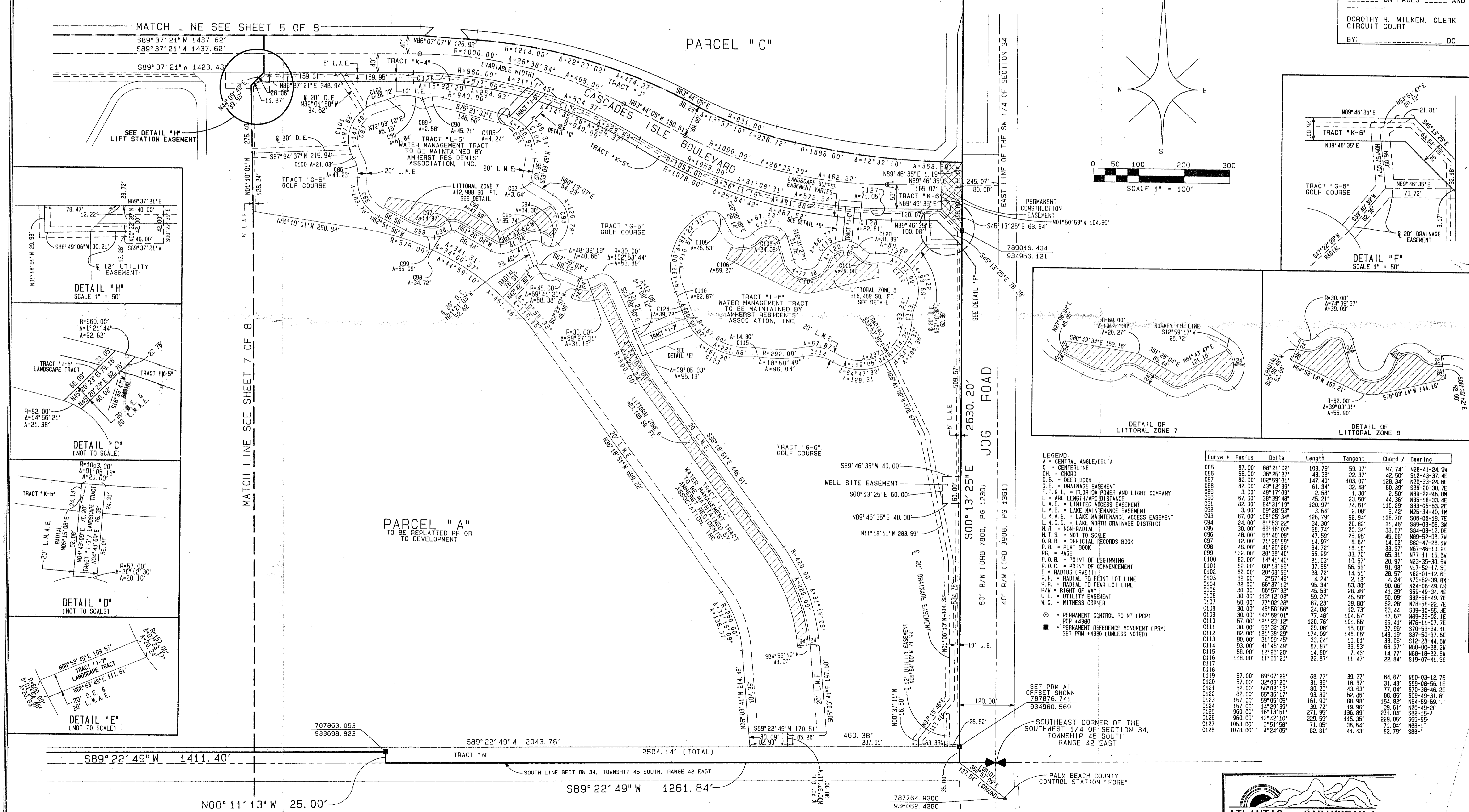
SITUATE IN SECTIONS 33 AND 34, TOWNSHIP 45 SOUTH, RANGE 42 EAST, AND SECTION 4, TOWNSHIP 46 SOUTH, RANGE 42 EAST, PALM BEACH COUNTY, FLORIDA; ALSO BEING A REPLAT OF A PORTION OF TRACTS 17 THROUGH 30, BLOCK 57; AND TRACTS 65 THROUGH 70, TRACTS 89 THROUGH 104, TRACTS 121 THROUGH 128, BLOCK 58, THE PALM BEACH FARMS COMPANY PLAT NO. 3, AS RECORDED IN PLAT BOOK 2, PAGES 45 THROUGH 54 INCLUSIVE; TOGETHER WITH A PORTION OF THE RIGHT OF WAYS ADJOINING SAID TRACTS AS SHOWN ON SAID PLAT OF PALM BEACH FARMS COMPANY PLAT NO. 3  
SHEET 8 OF 8  
AUGUST, 1996

STATE OF FLORIDA }  
COUNTY OF PALM BEACH } SS  
THIS PLAT WAS FILED FOR  
RECORD AT \_\_\_\_\_ DAY OF  
THIS \_\_\_\_\_ AD, 1996 AND  
DULY RECORDED IN PLAT BOOK  
\_\_\_\_\_ ON PAGES \_\_\_\_\_ AND  
\_\_\_\_\_  
DOROTHY H. WILKEN, CLERK  
CIRCUIT COURT  
BY: \_\_\_\_\_ DC



PARCEL "C-1"

PARCEL "C"

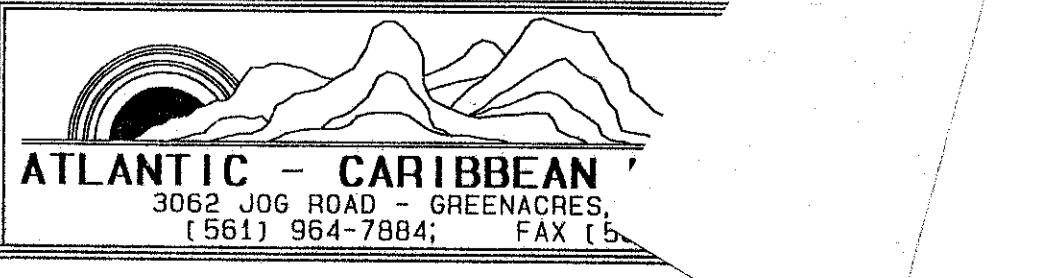


LEGEND:  
 A = CENTRAL ANGLE/Delta  
 CL = CENTERLINE  
 CH = CHORD  
 D.B. = DEED BOOK  
 D.E. = DRAINAGE EASEMENT  
 F.P. & L. = FLORIDA POWER AND LIGHT COMPANY  
 L = AND LENGTH/ARC DISTANCE  
 L.A.E. = LIMITED ACCESS EASEMENT  
 L.M.E. = LAKE MAINTENANCE EASEMENT  
 L.M.A.E. = LAKE MAINTENANCE ACCESS EASEMENT  
 L.M.D. = LAKE MOUTH DRAINAGE DISTRICT  
 N.R. = NON-RADIAL  
 N.T.S. = NOT TO SCALE  
 O.R.B. = OFFICIAL RECORDS BOOK  
 P.B. = PLAT BOOK  
 P.G. = PAGE  
 P.O.B. = POINT OF BEGINNING  
 P.O.C. = POINT OF COMMENCEMENT  
 R = RADIUS (RADII)  
 R.F. = RADIAL TO FRONT LOT LINE  
 R.R. = RADIAL TO REAR LOT LINE  
 R/W = RIGHT OF WAY  
 U.E. = UTILITY EASEMENT  
 W.C. = WITNESS CORNER

⊙ = PERMANENT CONTROL POINT (PCP)  
 ■ = PERMANENT REFERENCE MONUMENT (PRM)  
 SET PRM #4380 (UNLESS NOTED)

Curve	Radius	Delta	Length	Tangent	Chord / Bearing
C85	87.00'	68°21'02"	103.79'	59.07'	97.74' N28°41'-24.9M
C86	68.00'	36°25'27"	43.23'	22.37'	42.50' S12°43'-37.4E
C87	82.00'	102°58'31"	147.40'	103.07'	128.34' N20°33'-24.6E
C88	82.00'	43°12'39"	61.84'	32.48'	60.39' S86°20'-30.7E
C89	3.00'	49°17'09"	2.58'	1.38'	2.50' N89°22'-45.6M
C90	67.00'	38°39'48"	45.21'	23.50'	44.36' N85°18'-33.4E
C91	82.00'	84°31'19"	120.97'	74.51'	110.29' S33°05'-53.2E
C92	3.00'	69°28'53"	3.64'	2.08'	3.42' N25°34'-40.1M
C93	67.00'	108°25'34"	126.79'	92.94'	108.70' S06°06'-19.7E
C94	24.00'	81°53'29"	34.80'	20.82'	31.46' S89°03'-08.9M
C95	30.00'	68°16'03"	35.74'	20.34'	33.67' S84°08'-12.0E
C96	48.00'	56°49'09"	47.59'	25.95'	45.66' N89°52'-08.7M
C97	12.00'	71°28'59"	14.87'	8.64'	14.02' S82°47'-26.1M
C98	48.00'	41°26'26"	34.72'	18.16'	33.97' N87°46'-10.2E
C99	132.00'	28°38'40"	65.99'	33.70'	65.31' N77°11'-15.6M
C100	82.00'	14°41'40"	21.03'	10.57'	20.97' N23°35'-30.5M
C101	82.00'	68°13'56"	97.85'	55.55'	91.98' N17°52'-17.7E
C102	82.00'	20°03'55"	28.72'	14.51'	28.57' N62°01'-12.0E
C103	82.00'	66°37'12"	4.24'	2.12'	4.24' N73°52'-39.8M
C104	82.00'	66°37'12"	95.34'	63.88'	90.06' N24°08'-49.4E
C105	30.00'	86°57'32"	45.53'	28.45'	41.29' S89°49'-34.4E
C106	30.00'	113°12'03"	59.27'	45.50'	50.09' S82°56'-49.7E
C107	30.00'	77°02'28"	67.23'	39.80'	62.28' N78°58'-22.7E
C108	30.00'	48°58'59"	14.08'	7.27'	12.73' S33°15'-15.5E
C109	30.00'	147°59'01"	77.48'	104.57'	57.67' N89°29'-02.1E
C110	57.00'	121°23'12"	120.76'	101.55'	99.41' N76°11'-07.7E
C111	30.00'	58°32'36"	23.08'	15.80'	23.08' S70°53'-34.1E
C112	82.00'	121°38'29"	174.09'	143.19'	146.85' S37°00'-37.6E
C113	90.00'	21°09'45"	33.24'	16.81'	33.05' S12°23'-44.6M
C114	93.00'	41°48'49"	67.87'	35.53'	66.37' N80°00'-28.2M
C115	68.00'	12°28'20"	14.80'	7.43'	14.77' N81°09'-22.5M
C116	118.00'	11°06'21"	22.87'	11.47'	22.84' S19°00'-41.3E
C117					
C118					
C119	57.00'	69°07'22"	68.77'	39.27'	64.67' N50°03'-12.7E
C120	57.00'	32°03'20"	31.89'	16.37'	31.48' S59°08'-56.1E
C121	82.00'	56°02'12"	80.20'	77.04'	77.04' S70°53'-34.1E
C122	82.00'	69°36'17"	52.05'	28.05'	88.85' S89°49'-34.4E
C123	157.00'	59°05'05"	161.90'	88.98'	154.82' N64°59'-59.9M
C124	157.00'	14°29'39"	39.72'	19.96'	39.81' N80°48'-20.0M
C125	960.00'	11°19'51"	271.95'	136.89'	271.04' S38°15'-45.4E
C126	960.00'	13°42'10"	229.59'	115.35'	229.05' S65°55'-5.5E
C127	1053.00'	3°51'58"	71.05'	35.54'	71.04' N88°1'-1.1E
C128	1078.00'	4°24'05"	82.81'	41.43'	82.79' S88°1'-1.1E

SUBDIVISION \* JONES PUD  
 BOOK 78 PAGE 78  
 FLOOD ZONE AH16  
 QUAD #56  
 ZIP CODE 33437  
 SE  
 PUD NAME JONES PUD  
 TAZ - 4152



0683-001 78-78